



Facts & Institutional Figures

Center for Institutional Effectiveness

A 3D graphic of a ribbon or banner, rendered in light blue and grey, with a perspective view. The text "2017 - 2018" is centered on the ribbon.

2017 - 2018

The College of New Jersey

Facts & Institutional Figures

Prepared By:

The Center for Institutional Effectiveness

Mosen Auryan

Associate Provost for Institutional Effectiveness

auryanm@tcnj.edu

Jim Mehalick

Director of Business Intelligence

mehalici@tcnj.edu

Marie Tuscano

Assistant Director of Institutional Research

tuscano@tcnj.edu

LaMont Rouse

Assistant Director of Assessment

rousel@tcnj.edu

Jennifer Sizoo

Research Analyst

sizoo@tcnj.edu

Telephone: 609/771-2801 Fax: 609/637-5136

Center for Institutional Effectiveness Homepage: <http://cie.tcnj.edu>

Contents

Mission & Vision	4
At A Glance	5
SYNOPSIS OF UNDERGRADUATE DEGREE PROGRAMS AND MAJORS	7
SYNOPSIS OF GRADUATE DEGREE PROGRAMS AND MAJORS	9
TOP 20 MOST POPULAR UNDERGRADUATE MAJORS	11
AVERAGE SCHOLASTIC APTITUDE TEST SCORES BY ADMIT TYPE FOR FIRST-TIME FRESHMAN	12
FIRST-TIME FRESHMAN ADMISSIONS ACTIVITY	13
DISTRIBUTION OF COMPLETED ADMISSIONS APPLICATIONS AND ACCEPTED OFFERS	14
ENROLLMENT BY SCHOOL AND ATTENDANCE STATUS	15
TRENDS IN TOTAL ENROLLMENT	17
ETHNICITY OF STUDENTS	18
COLLEGE ENROLLMENT BY GENDER	20
UNDERGRADUATE ENROLLMENT BY GENDER AND RESIDENCE STATUS	21
ENROLLMENT BY MAJOR	23
1st TO 2nd YEAR RETENTION FOR ENTERING FIRST-TIME, FULL-TIME FRESHMEN BY SCHOOL AND ETHNICITY	25
GRADUATION RATES FOR ENTERING FIRST-TIME, FULL-TIME FRESHMAN ETHNICITY AND GENDER	25
DEGREES GRANTED BY SCHOOL, DEGREE TYPE AND MAJOR	26
EMPLOYEES BY ETHNICITY AND IPEDS OCCUPATIONAL CATEGORY	28
EMPLOYEES BY GENDER	29
NUMBER OF FACULTY BY RANK AND TENURE STATUS	30
TENURE STATUS AMONG FULL-TIME TENURE TRACK FACULTY	31
AVERAGE TOTAL COMPENSATION OF FULL-TIME FACULTY BY RANK	32
STATEMENT OF OPERATING ACTIVITIES	33
OPERATING REVENUE, EXPENSES AND TRANSFERS	34
CHANGE IN NET ASSETS	36

EXTERNALLY SPONSORED ACTIVITIES	37
UNDERGRADUATE TUITION, FEES, ROOM AND BOARD CHARGES PER YEAR AND ANNUAL RATE OF INCREASE	38
BUILDING INVENTORY	39
COLLEGE LIBRARY	40
THE COLLEGE OF NEW JERSEY REGIONAL, NATIONAL, AND SPECIALIZED ACCREDITORS	41
ADMINISTRATIVE ORGANIZATION CHART	42
BOARD OF TRUSTEES	43



Mission & Vision

MISSION STATEMENT

The College of New Jersey, founded in 1855 as the New Jersey State Normal School, is primarily an undergraduate and residential college with targeted graduate programs. Grounded in the liberal arts, TCNJ's personalized, collaborative, and rigorous education engages students at the highest level within and beyond the classroom. TCNJ believes in the transformative power of education to develop critical thinkers, responsible citizens, and lifelong learners and leaders. The College empowers its diverse students, staff and faculty to sustain and enhance their communities both locally and globally.

VISION

TCNJ will offer an unparalleled education in a vibrant, collaborative and inclusive community of learners who will make a distinct mark on the world. By following our values, we will serve as a national exemplar of public higher education, and we will do this while being committed to accessibility and affordability.



At A Glance

HISTORY/LOCATION

- 1855 New Jersey State Normal School
- 1908 New Jersey State Normal School at Trenton
- 1929 New Jersey State Teachers College and State Normal School at Trenton
- 1937 New Jersey State Teachers College at Trenton
- 1958 Trenton State College
- 1996 The College of New Jersey

The College of New Jersey (TCNJ) is a highly selective institution that has earned national recognition for its commitment to excellence. TCNJ currently is ranked as the No. 1 public institution in the northern region of the country by U.S. News & World Report, and is considered a best value in higher education by both Princeton Review and Kiplinger's Personal Finance. TCNJ was also awarded, in 2006, a Phi Beta Kappa chapter, an honor shared by less than 10 percent of colleges and universities nationally.

The College of New Jersey's academic tradition reaches back to 1855 when it was established by the state legislature as the New Jersey State Normal School. It was the first teacher training school in the state and the ninth in the nation. Governor Rodman Price, sometimes called the founder of the New Jersey Normal School, promoted the idea of a training institute for New Jersey's teachers and mobilized support among influential state leaders.

Originally located on Clinton Avenue in Trenton, the Normal School flourished in the latter 1800s, expanding both its academic offerings and physical facilities. In 1925, the first four-year baccalaureate degree program was established. This change marked the beginning of TCNJ's transition from a normal school to a teachers' college and was accompanied by a change in physical surroundings. In 1928, a beautiful 210-acre tract of land in Ewing Township was purchased as a new site for the College.

Graduate study was instituted at the College in 1947, and accreditation from various national associations was forthcoming in the 1950s. The enactment of the Higher Education Act of 1966 paved the way for TCNJ to become a multipurpose institution by expanding its degree programs into a variety of fields other than education. By 1972, seventy percent of entering students were selecting non-teaching majors.

In the 1970s, a period of declining enrollments nationwide, the College made a decision to raise, rather than lower, its already high standards. Since that time, the academic profile of entering classes has continued to rise and as a result, the College has become one of the most competitive schools of its kind in the nation. Today the College provides academically prepared students with a challenging undergraduate education and a rewarding residential experience, small classes, and a prestigious faculty.

ACADEMIC SCHOOLS, PROGRAMS AND DEGREES

The College of New Jersey emphasizes the undergraduate experience. A strong liberal arts core forms the foundation for a wealth of degree programs offered through TCNJ's seven schools—Arts & Communication; Business; Humanities & Social Sciences; Education; Science; Nursing, Health, & Exercise Science; and Engineering. The College is enriched by an honors program and extensive opportunities to study abroad, and its award-winning First-Year Experience and freshman orientation programs have helped make its retention and graduation rates among the highest in the country.

CAMPUS

Known for its natural beauty, the College's campus is set on 289 tree-lined acres in suburban Ewing Township. The College has 39 major buildings, including a state-of-the-art library; 14 residence halls that accommodate 3,600 students; an award-winning student center; more than 20 academic computer laboratories; a full range of laboratories for nursing, microscopy, science, and technology; a music building with a 300-seat concert hall; and a collegiate recreation and athletic facilities complex. TCNJ has a full-time undergraduate enrollment of approximately 6,200 students (95 percent from New Jersey).

STUDENT LIFE

The College of New Jersey encourages students to expand their talents and skills through more than 150 organizations that are open to students. These groups range from performing ensembles and professional and honor societies to student publications, Greek organizations, as well as intramural and club sports. The College also offers numerous leadership opportunities through the Student Finance Board, Student Government Association, and Residence Hall Government to name a few.

ATHLETICS

High achievement and scholarship in the classroom have been mirrored by the success of The College of New Jersey's varsity student-athletes. Since the 1978–79 Lion wrestling team captured the College's first National Collegiate Athletic Association (NCAA) team championship, TCNJ has established itself as one of the nation's most successful Division III (non-athletic scholarship) programs. Since 1979, The College of New Jersey has amassed a total of 39 Division III crowns in six different sports. In addition, the Lions have posted 32 runner-up awards, giving the College an aggregate of 71 first- and second-place finishes. That figure is tops among the nation's 400-plus Division III colleges and universities during the past 30 years. The Lions have also produced 54 Division III CoSIDA Academic All-Americans.

As impressive as the overall athletic record is, TCNJ's accomplishment as a leader in women's sports is even greater. Since NCAA Championships were initiated for women in 1981, only TCNJ has won 32 Division III team championships. The total does not include the Lions' lacrosse championship in 1981 or the softball championships in 1980 and 1981, which were sponsored by the AIAW (Association for Intercollegiate Athletics for Women) prior to women's sports inclusion in the NCAA. In the fall of 1999, TCNJ's women's athletic program was voted as the top Division III institution for female student-athletes by *Sports Illustrated for Women*.

SYNOPSIS OF UNDERGRADUATE DEGREE PROGRAMS AND MAJORS

College-Wide Programs	Self-Designed Major	BA
School of the Arts & Communication	Art Education	BA
	Art History	BA
	Communication Studies	BA
	Visual Arts (options available in Fine Arts, Graphic Design and Lens-Based Art)	BFA
	Interactive Multimedia	BA
	Journalism & Professional Writing	BA
	Music (options available in Performance and Teacher Preparation)	BA, BM
School of Business	Accountancy	BS
	Business Administration (specializations in Finance, Interdisciplinary Business, International Business, Management, Marketing)	BS
	Economics (options available in Secondary Education and 7 Year Medical)	BA, BS
School of Education	Early Childhood Education (Special Education & Deaf and Hard of Hearing options)**	BS
	Education of the Deaf and Hard of Hearing/Elementary Education**	BS
	Elementary Education**	BS
	Special Education/Elementary Education**	BS
	Speech-Language Pathology & Audiology	BS
	Urban Education **	BS
**non-certification at the baccalaureate level; 5 year dual certification at the master's level		
School of Engineering	Biomedical Engineering (7 Year Medical option)	BSBME
	Civil Engineering	BSCE
	Computer Engineering	BSCoE
	Electrical Engineering	BSEE
	Engineering Science (specializations in Engineering Management; 7 Year Medical option)	BS
	Mechanical Engineering	BSME
	Integrative STEM Education	BS
School of Humanities & Social Sciences	African American Studies	BA
	Criminology	BA
	English***	BA
	History***	BA
	International Studies	BA

	Philosophy **	BA
	Political Science	BA
	Psychology	BA
	Sociology	BA
	Spanish***	BA
	Women's and Gender Studies	BA
** option in 7 Year Medical Programs *** options in Secondary Education and 7 Year Medical Programs		
School of Nursing, Health, and Exercise Science	Health and Exercise Science (option available in Teacher Preparation)	BS
	Nursing	BSN
	Public Health	BS
School of Science	Biology*	BS/BA
	Chemistry*	BS
	Computer Science	BS
	Mathematics*	BS
	Physics*	BS
*options available in Secondary Education and 7 Year Medical Programs		

Key	
BA	Bachelor of Arts
BFA	Bachelor of Fine Arts
BM	Bachelor of Music
BS	Bachelor of Science
BABME	Bachelor of Arts in Biomedical Engineering
BSCE	Bachelor of Science in Civil Engineering
BSCoE	Bachelor of Science in Computer Engineering
BSEE	Bachelor of Science in Electrical Engineering
BSE	Bachelor of Science in Engineering
BSME	Bachelor of Science in Mechanical Engineering
BSN	Bachelor of Science in Nursing

SYNOPSIS OF GRADUATE DEGREE PROGRAMS AND MAJORS

Educational Specialist	Marriage and Family Counseling	EDS
Master of Arts	School Counseling	MA
	Clinical Mental Health Counseling	MA
	Marriage, Couples and Family Counseling and Therapy	MA
	English	MA
Master of Arts in Teaching	Elementary Education (Leads to Certification)	MAT
	Early Childhood (Leads to Certification) Program A (no prior teaching certificate) Program B (already P-3 certified through alternate route)	MAT
	MAT Early Childhood: Urban (available only to graduates of TCNJ's undergraduate portion of this program) MAT Elementary: Urban (available only to graduates of TCNJ's undergraduate portion of this program)	MAT
	Education of the Deaf and Hard of Hearing (available only to graduates of TCNJ's undergraduate portion of this program)	MAT
	Secondary Education- English (Leads to Certification/new applicants not accepted after 2017-18 academic year)	MAT
	Secondary Education- Social Studies (Leads to Certification/new applicants not accepted after 2017-18 academic year)	MAT
	Secondary Education- Mathematics (Leads to Certification)	MAT
	Secondary Education- Science: Biology, Chemistry or Physics (Leads to Certification)	MAT
	Secondary Education-Technology Education 2014-2015 Planner	MAT
	Special Education (Leads to Certification) Alternate Route to Special Education Certification Program	MAT
	Special Education (Leads to Certification)	MAT
	Master of Education	Teaching English as a Second Language
Reading (Leads to Certification)		MED
Reading (with Reading Specialist Certification)		MED
Educational Leadership: Instruction (through RTC)		MED

	Educational Leadership (Leads to Principal Certification)	MED
	Special Education (Must be Certified in Special Education)	MED
	Special Education (Must be Certified in Other Area)	MED
	Special Education- Teacher of Students with Blindness or Visual Impairment (Must be Certified)	MED
	Integrative Science, Technology, Engineering and Math (I-STEM)	MED
Master of Public Health	Public Health	MPH
Master of Science in Nursing	Family Nurse Practitioner	MSN
	Family Nurse Practitioner (for Certified NPs)	MSN
	Adult-Gerontological Nurse Practitioner	MSN
	Neonatal Nurse Practitioner Planner 2008-2009	MSN
	Clinical Nurse Leader *Program recently highlighted in Advance for Nurses.	MSN
	Bridge to the Master of Science in Nursing for RNs (not available for school nursing)	MSN
	School Nurse	MSN

**20 MOST POPULAR UNDERGRADUATE MAJORS
FALL 2017**

Rank	Major
1	Biology
2	Psychology
3	Elementary Education
4	Communication Studies
5	Nursing
6	Marketing
7	Finance
8	Accountancy
9	Health & Exercise Science
10	Management
11	Mathematics
12	Criminology
13	Computer Science
14	Political Science
15	Biomedical Engineering
16	English
17	Mechanical Engineering
18	Interactive Multimedia
19	International Studies
20	English – Secondary Education

Note: Ranks are based on primary major enrollment counts.

SOURCE: CIE Enrollment data

**AVERAGE SAT SCORES BY ADMIT TYPE FOR FIRST-TIME FRESHMEN ENTERING
FALL 2017**

SAT Evidence Based Reading/Writing Scores	
Regular Admits	635
EOF Admits	564
All Admits	626
National Average	533
SAT Mathematics Scores	
Regular Admits	639
EOF Admits	561
All Admits	629
National Average	527

Source: TCNJ Center for Institutional Effectiveness/College Board 2017

*Scores for SAT tests taken prior to 2016 have been converted to new SAT 2016 scores using the College Board's concordance tables.

**FIRST-TIME FRESHMAN ADMISSIONS ACTIVITY
FALL 2017**

	Total Applications	Offered Admission	Offer Rate	Offer Accepted	Yield
All Students					
Total	12898	6130	47.53%	1542	25.2%
NJ Residents					
Total	11400	5244	46.00%	1443	27.5%
Non Resident					
Total	1497	886	59.19%	99	11.2%

FIRST-TIME FRESHMEN FALL SEMESTER ADMISSIONS TRENDS

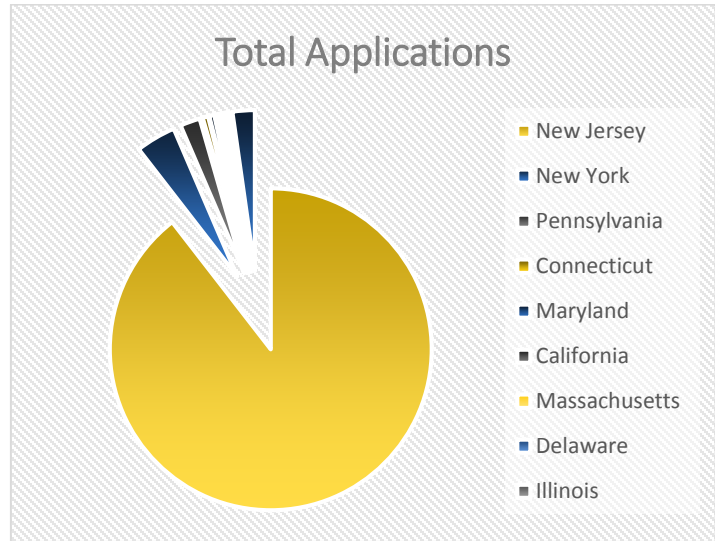
Fall 2010 - 2017

	2010	2011	2012	2013	2014	2015	2016	2017
Number of Applications Received	9,956	10,150	10,295	11,145	10,937	11,290	11,825	12,898
Number of Acceptances	4,708	4,710	4,750	4,805	5,356	5,495	5,778	6,130
Number of Students Matriculated	1,421	1,371	1,363	1,404	1,417	1,453	1,457	1,542
Accept Ratio:	47%	46%	46%	43%	49%	49%	49%	48%
Enrollment Yield:	30%	29%	29%	29%	26%	26%	25%	25%

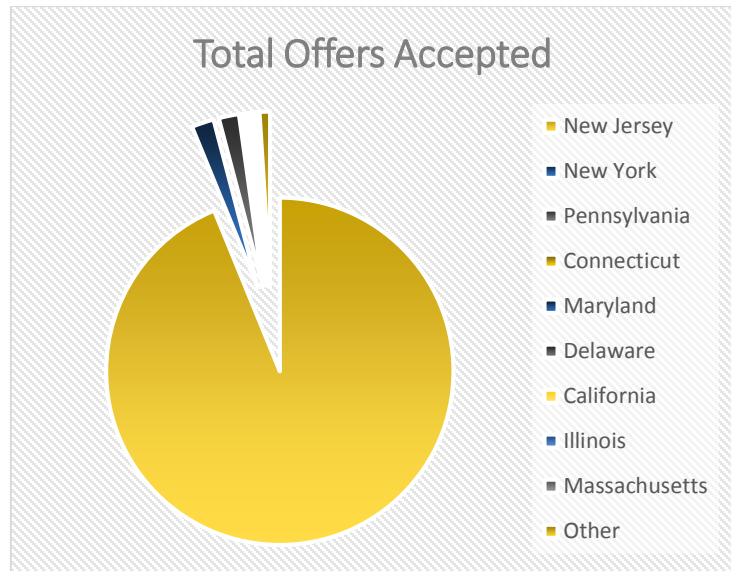
Source: TCNJ Center for Institutional Effectiveness

DISTRIBUTION OF COMPLETED ADMISSIONS APPLICATIONS AND ACCEPTED OFFERS FIRST-TIME FRESHMAN FROM SELECT STATES FALL 2017

State	Total Applications	% of Total
New Jersey	11,546	89.516%
New York	519	4.02%
Pennsylvania	258	2.00%
Connecticut	70	0.54%
Maryland	64	0.50%
California	52	0.40%
Massachusetts	34	0.26%
Delaware	24	0.19%
Illinois	22	0.17%
Florida	21	0.16%
Other	289	2.24%



State	Offers Accepted	% of Total
New Jersey	1444	93.83%
New York	32	2.08%
Pennsylvania	29	1.88%
Connecticut	5	0.32%
Maryland	5	0.32%
Delaware	2	0.13%
California	2	0.13%
Illinois	1	0.06%
Massachusetts	4	0.26%
Other	15	0.97%
Total All Offers Accepted	1539	100%



**ENROLLMENT BY SCHOOL AND ATTENDANCE STATUS
FALL 2013-2017**

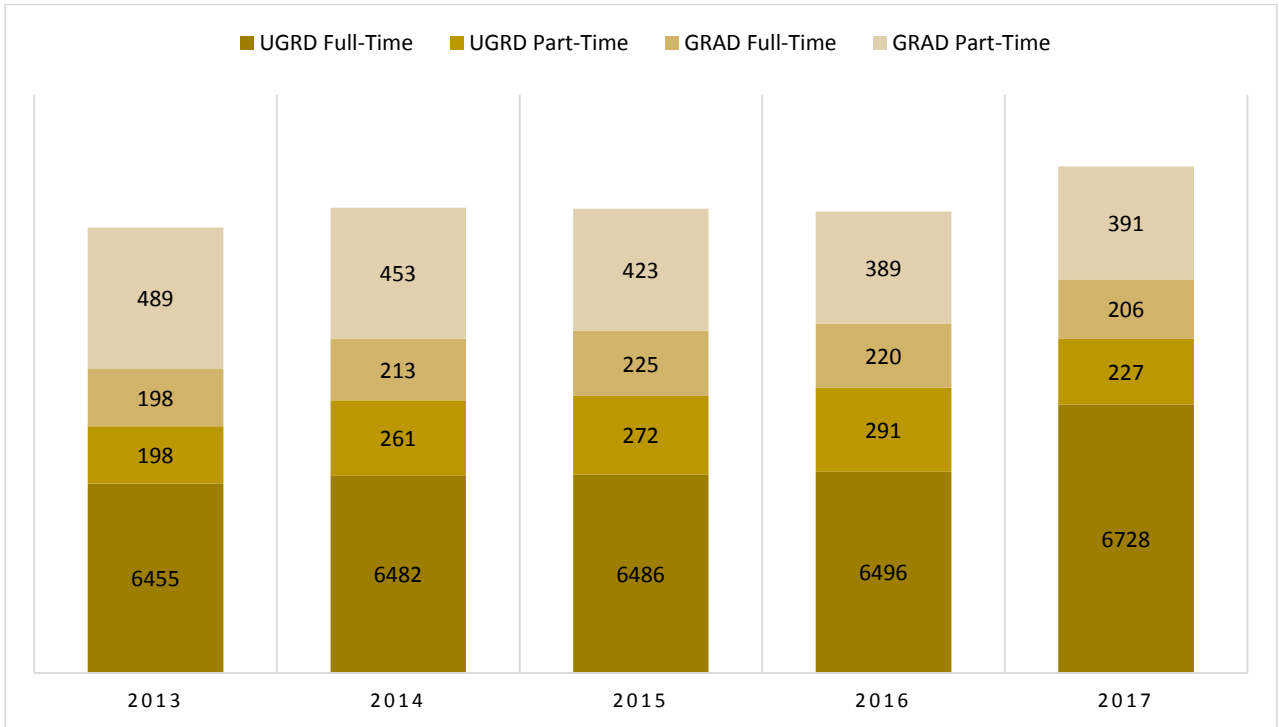
	2013	2014	2015	2016	2017
College Total	7340	7409	7406	7396	7552
<i>Full-Time</i>	6653	6695	6711	6716	6934
<i>Part-Time</i>	687	714	695	680	618
Undergraduate Total College	6653	6743	6758	6787	6955
<i>Full-Time</i>	6455	6482	6486	6496	6728
<i>Part-Time</i>	198	261	272	291	227
Graduate Total College	687	666	648	609	597
<i>Full-Time</i>	198	213	225	220	206
<i>Part-Time</i>	489	453	423	389	391
School of Arts & Communications	746	721	743	795	785
Undergraduate	746	721	743	795	785
<i>Full-Time</i>	728	702	714	768	765
<i>Part-Time</i>	18	19	29	27	20
School of Business	1162	1219	1164	1206	1204
Undergraduate	1162	1219	1164	1206	1204
<i>Full-Time</i>	1145	1186	1138	1165	1176
<i>Part-Time</i>	17	33	26	41	28
School of Humanities & Social Sciences	1749	1745	1706	1554	1549
Undergraduate	1718	1719	1674	1530	1522
<i>Full-Time</i>	1660	1671	1630	1491	1482
<i>Part-Time</i>	58	48	44	39	40
Graduate	31	26	32	24	27
<i>Full-Time</i>	11	5	17	8	10
<i>Part-Time</i>	20	21	15	16	17
School of Education	1290	1262	1299	1222	1158
Undergraduate	747	766	770	768	766
<i>Full-Time</i>	737	759	759	752	761
<i>Part-Time</i>	10	7	11	16	5

<i>Fall Enrollment Continued</i>	2013	2014	2015	2016	2017
School of Education					
Graduate	543	496	529	454	392
<i>Full-Time</i>	180	196	180	211	190
<i>Part-Time</i>	363	300	349	243	202
School of Engineering	529	525	555	581	652
Undergraduate	529	525	555	581	627
<i>Full-Time</i>	523	520	550	574	619
<i>Part-Time</i>	6	5	5	7	8
Graduate	-	-	-	-	25
<i>Part-Time</i>	-	-	-	-	25
School of Nursing, Health & Exercise Science	528	540	571	652	750
Undergraduate	500	514	537	619	705
<i>Full-Time</i>	482	481	471	524	617
<i>Part-Time</i>	18	33	66	95	88
Graduate	28	26	34	33	45
<i>Full-Time</i>	6	10	10	0	4
<i>Part-Time</i>	22	16	24	33	41
School of Science	1060	1003	1058	1088	1157
Undergraduate	1060	1003	1058	1088	1157
<i>Full-Time</i>	1046	981	1040	1070	1140
<i>Part-Time</i>	14	23	18	18	17
Non-Matriculated/ Visiting/Undeclared /Independent Studies	276	394	394	289	297
Undergraduate	276	191	257	200	189
<i>Full-Time</i>	182	134	184	152	168
<i>Part-Time</i>	94	57	73	48	21
Graduate	118	85	53	89	108
<i>Full-Time</i>	2	1	18	1	2
<i>Part-Time</i>	116	84	35	88	106

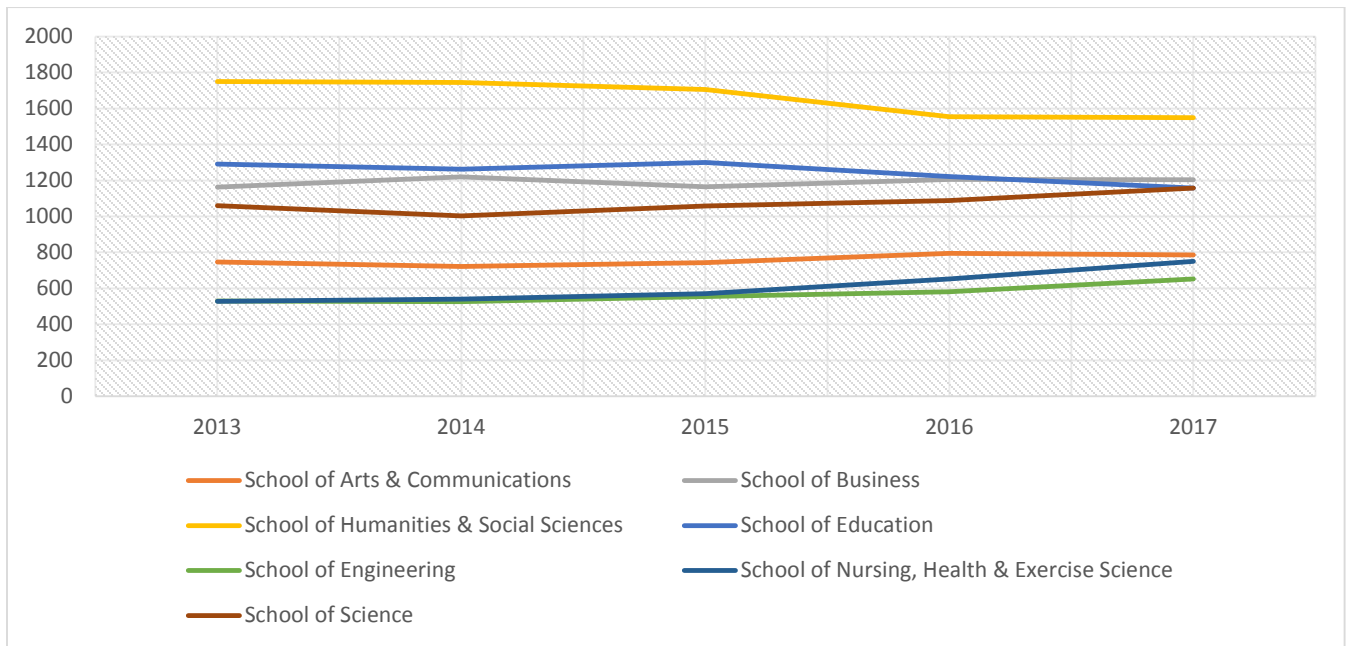
Official Census Date headcounts

Note: Enrollment counts include first majors only.

TRENDS IN TOTAL ENROLLMENT FALL 2013-2017



TRENDS IN TOTAL ENROLLMENT BY SCHOOL Fall 2013 – 2017



ETHNICITY OF STUDENTS FALL 2013-2017

Undergraduate Race/Ethnicity	2013	2014	2015	2016	2017
White	4391	4360	4405	4482	4542
African-American/Black	324	345	378	380	412
Hispanic	742	854	830	857	892
Asian	611	681	690	741	803
Native American	10	15	17	12	9
Native Hawaiian*	19	20	21	14	16
Not Reported	477	410	368	260	228
Two or More Races*	63	45	30	25	34
Non-Resident Alien*	16	13	19	16	19
Total	6653	6743	6758	6787	6955

Graduate Race/Ethnicity	2013	2014	2015	2016	2017
White	471	417	428	436	413
African-American/Black	52	42	51	43	28
Hispanic	34	36	53	43	55
Asian	27	30	37	33	29
Native American	2	3	2	1	1
Native Hawaiian*	3	4	2	2	7
Not Reported	92	131	74	51	64
Two or More Races*	6	3	1	0	0
Non-Resident Alien*	0	0	0	0	0
Total	687	666	648	609	597

*Federal reporting requirements for ethnicity were revised in 2010. New categories for Native Hawaiian, Two or more races and Non-Resident Aliens were added, Other was removed.

Official Census Date enrollment counts

ETHNICITY OF STUDENTS BY SCHOOL FALL 2017

Undergraduate Race/Ethnicity

Undergraduate	African American	Asian	Hispanic	Native American	Native Hawaiian	Non Resident Alien	Not Reported	Two or more races	White	Total
<i>School of Arts & Communications</i>	57	51	97	1	0	0	19	3	557	785
<i>School of Business</i>	58	124	154	2	4	4	38	4	816	1204
<i>School of Humanities & Social Sciences</i>	112	128	225	0	1	2	48	7	999	1522
<i>School of Education</i>	31	45	82	5	1	2	19	3	578	766
<i>School of Engineering</i>	27	78	79	0	5	2	16	3	417	627
<i>School of Nursing Health & Exercise Science</i>	52	69	92	0	3	2	23	5	459	705
<i>School of Science</i>	57	289	135	0	1	7	36	7	625	1157
<i>Non-Matriculated /Visiting & Other</i>	18	19	28	1	1	0	29	2	91	189
Total Undergraduate	412	803	892	9	16	19	228	34	4542	6955

Graduate Race/Ethnicity

Graduate	African American	Asian	Hispanic	Native American	Native Hawaiian	Non Resident Alien	Not Reported	Two or more races	White	Total
<i>School of Humanities & Social Sciences</i>	0	0	0	0	0	0	0	0	27	27
<i>School of Education</i>	20	14	40	1	6	0	21	0	290	392
<i>School of Engineering</i>	0	2	1	0	0	0	1	0	21	25
<i>School of Nursing Health & Exercise Science</i>	2	8	1	0	0	0	0	0	34	45
<i>Non-Matriculated & Visiting</i>	6	5	13	0	1	0	42	0	41	108
Total Graduate	28	29	55	1	7	0	64	0	413	597

Official Census Date enrollment counts.

**ENROLLMENT BY GENDER – FALL 2013 - 2017
TOTAL COLLEGE**

Undergraduate	2013	2014	2015	2016	2017
<i>Female</i>	3802	3875	4011	3960	4001
<i>Male</i>	2851	2868	2747	2827	2954
Total	6653	6743	6758	6787	6955
Graduate	2013	2014	2015	2016	2017
<i>Female</i>	580	555	535	500	509
<i>Male</i>	107	111	113	109	88
Total	687	666	648	609	597

**ENROLLMENT BY GENDER – FALL 2013-2017
GRADUATE LEVEL – By SCHOOL**

	2013	2014	2015	2016	2017
School of Humanities & Social Sciences					
<i>Graduate Students Enrolled</i>	31	26	32	24	27
Female	24	21	24	11	19
Male	7	5	8	13	8
School of Education					
<i>Graduate Students Enrolled</i>	543	496	529	454	392
Female	461	413	434	381	339
Male	82	83	95	73	53
School of Engineering					
<i>Graduate Students Enrolled</i>	-	-	-	9	25
Female	-	-	-	7	19
Male	-	-	-	2	6
School of Nursing, Health & Exercise Science					
<i>Graduate Students Enrolled</i>	28	26	34	33	45
Female	26	20	32	28	40
Male	2	6	2	5	5

Official Census Date enrollment counts

ENROLLMENT BY GENDER – FALL 2013 - 2017
UNDERGRADUATE LEVEL – BY SCHOOL

	2013	2014	2015	2016	2017
School of Arts & Communications	746	721	743	795	785
<i>Female</i>	446	429	460	506	482
<i>Male</i>	300	292	283	289	303
School of Business	1162	1219	1164	1206	1204
<i>Female</i>	453	471	466	462	467
<i>Male</i>	709	748	698	744	737
School of Education	747	786	770	768	766
<i>Female</i>	699	723	729	721	717
<i>Male</i>	48	43	41	47	49
School of Engineering	529	525	555	581	627
<i>Female</i>	127	129	138	143	151
<i>Male</i>	402	396	417	438	476
School of Humanities & Social Sciences	1718	1719	1674	1530	1522
<i>Female</i>	1085	1078	1096	986	467
<i>Male</i>	633	641	578	544	550
School of Nursing Health & Exercise Science	500	514	537	619	705
<i>Female</i>	363	369	402	469	528
<i>Male</i>	137	145	135	150	177
School of Science	1060	1003	1058	1088	1157
<i>Female</i>	522	518	571	577	593
<i>Male</i>	538	485	487	511	564
Other Undergraduate: <i>Non-Matriculated, Undecided, Visiting, Independent Studies</i>	191	276	257	200	189
<i>Female</i>	107	158	149	96	91
<i>Male</i>	84	118	108	104	98

Official Census Date Enrollment Counts

**ENROLLMENT BY RESIDENCE (In-State/Out-of-State)
FALL 2013 - 2017**

Undergraduate	2013	2014	2015	2016	2017
<i>NJ Resident</i>	6269	6289	6338	6376	6537
<i>Non-Resident</i>	384	454	420	411	418
Total	6653	6743	6758	6787	6955
Graduate	2013	2014	2015	2016	2017
<i>NJ Resident</i>	590	561	565	501	526
<i>Non-Resident</i>	97	105	83	108	71
Total	687	666	648	609	597
Residence By School	2013	2014	2015	2016	2017
Undergraduate School of Arts & Communications	746	721	743	795	785
<i>NJ Resident</i>	706	688	717	765	756
<i>Non-Resident</i>	40	33	26	30	29
Undergraduate School of Business	1162	1219	1164	1206	1204
<i>NJ Resident</i>	1114	1172	1113	1144	1136
<i>Non-Resident</i>	48	47	51	62	68
Undergraduate School of Education	747	766	770	768	766
<i>NJ Resident</i>	701	715	717	721	721
<i>Non-Resident</i>	46	51	53	47	45
Undergraduate School of Engineering	529	525	555	581	627
<i>NJ Resident</i>	482	477	487	516	559
<i>Non-Resident</i>	47	48	68	65	68
Undergraduate School of Humanities & Social Sciences	1718	1719	1674	1530	1522
<i>NJ Resident</i>	1652	1658	1617	1478	1470
<i>Non-Resident</i>	66	61	57	52	52
Undergraduate School of Nursing Health & Exercise Science	500	514	537	619	705
<i>NJ Resident</i>	459	481	489	562	645
<i>Non-Resident</i>	41	33	48	57	60
Undergraduate School of Science	1060	1003	1058	1088	1157
<i>NJ Resident</i>	998	952	1002	1028	1091
<i>Non-Resident</i>	62	51	56	60	66
Other Undergraduate: <i>Non-Matriculated, Undecided, Visiting</i>	191	276	257	200	189
<i>NJ Resident</i>	157	146	196	162	159
<i>Non-Resident</i>	34	130	61	38	30

**ENROLLMENT BY MAJOR
Academic Year 2017 - 2018**

Please use the following link to access tables that contain enrollment data for majors over the past five fall terms. The enrollment tables include enrollment by plan (1st Major) with breakouts for FT/PT, Race/Ethnicity, Gender, Academic Level, Second Major, and Sub-plan and are derived from the 10th day census date.

[FB2017_18EnrollmentByMajor 1.xlsx](#)

**FIRST YEAR TO SECOND YEAR
RETENTION RATES FOR
ENTERING FIRST-TIME, FULL-TIME FRESHMAN
BY ETHNICITY
FALL 2011 – FALL 2017**

	Fall 2011	Fall 2012	Fall 2013	Fall 2014	Fall 2015	Fall 2016	5 YR AVG % Retained from cohort to 2nd Fall Term
Total # Freshmen in Cohort	1371	1363	1404	1416	1454	1457	--
African American	95.24%	90.91%	91.94%	97.83%	92.05%	93.83%	93.31%
Asian	94.71%	94.87%	92.25%	92.96%	96.39%	95.31%	94.36%
Hispanic	92.81%	89.47%	92.93%	94.44%	93.81%	89.67%	92.06%
Native American	83.33%	100.00%	100.00%	100.00%	75.00%	NA	91.67%
Native Hawaiian	100.00%	83.33%	100.00%	100.00%	100.00%	NA	96.67%
Not Reported	96.30%	89.01%	98.81%	100.00%	90.57%	86.68%	93.01%
White	94.37%	95.26%	94.77%	94.47%	93.88%	94.60%	94.60%
% Retained from Total Cohort to 2nd Fall Term	93.82%	93.84%	94.31%	94.63%	93.67%	93.89%	94.07%

**1st YEAR to 2nd YEAR RETENTION RATES BY SCHOOL
FALL 2012 – FALL 2017**

School	2012	2013	2014	2015	2016
Arts & Communication	86.43%	91.02%	98.64%	96.05%	92.86%
Business	89.45%	90.00%	95.51%	95.02%	93.95%
Education	90.54%	90.32%	96.67%	93.33%	96.73%
Engineering	78.86%	84.62%	93.42%	95.71%	93.06%
Humanities and Social Sciences	85.20%	89.30%	93.37%	89.70%	92.31%
Nursing, Health & Exercise Science	82.08%	85.11%	91.35%	95.10%	93.89%
Science	83.58%	89.31%	94.14%	92.52%	95.00%
All TCNJ	93.84%	94.31%	94.63%	93.67%	93.89%

Source: Official Census Date Enrollment/freshmen cohort data- % returning in School

**4 YEAR, 5 YEAR & 6 YEAR
GRADUATION RATES FOR
ENTERING FIRST-TIME FRESHMAN
BY ETHNICITY & GENDER
FALL 2007 – FALL 2011 COHORTS**

Entering Cohort Year	2007	2008	2009	2010	2011
Total Number in Cohort	1297	1295	1283	1421	1371
<i>% Graduating within 4 Years</i>	73%	73%	73%	75%	73%
<i>% Female</i>	78	76	77	78	76
<i>% Male</i>	64	67	65	71	69
<i>% African-American</i>	37	37	55	47	52
<i>% Asian</i>	76	84	78	82	71
<i>% Hispanic</i>	58	58	56	58	65
<i>% Native American</i>	100	0	0	100	NA
<i>% Native Hawaiian/Pacific Islander</i>	0	25	80	50	67
<i>% Non-Resident Alien</i>	0	50	50	50	50
<i>% White</i>	78	76	75	79	77
<i>% Two or More Races</i>	100	77	83	69	74
<i>% Not Reported</i>	72	81	67	81	72
<i>% Graduating within 5 Years</i>	83%	84%	83%	85%	85%
<i>% Female</i>	86	86	87	86	85
<i>% Male</i>	79	81	78	83	85
<i>% African-American</i>	56	60	71	62	71
<i>% Asian</i>	83	91	84	90	85
<i>% Hispanic</i>	71	77	73	75	80
<i>% Native American</i>	100	0	0	100	NA
<i>% Native Hawaiian/Pacific Islander</i>	79	75	100	100	100
<i>% Non-Resident Alien</i>	0	100	50	50	83
<i>% White</i>	87	87	86	87	87
<i>% Two or More Races</i>	87	89	92	79	79
<i>% Not Reported</i>	84	87	81	90	85
<i>% Graduating within 6 Years</i>	85%	87%	85%	87%	87%
<i>% Female</i>	87	88	88	87	87
<i>% Male</i>	81	85	80	86	86
<i>% African-American</i>	64	69	74	70	75
<i>% Asian</i>	83	91	85	92	85
<i>% Hispanic</i>	76	81	75	78	83
<i>% Native American</i>	100	0	0	100	NA
<i>% Native Hawaiian/Pacific Islander</i>	83	100	100	100	100
<i>% Non-Resident Alien</i>	0	100	50	50	83
<i>% White</i>	88	89	87	89	88
<i>% Two or More Races</i>	100	90	92	79	89
<i>% Not Reported</i>	84	88	82	90	87

Source: IPEDS Graduate Rate Survey first-time freshmen cohorts

**DEGREES GRANTED BY SCHOOL AND DEGREE TYPE
2012-2017**

School	Degree	2012-13	2013-14	2014-15	2015-16	2016-17
Arts & Comm UGRD	BA	98	118	120	142	171
Arts & Comm UGRD	BFA	28	35	28	30	24
Arts & Comm UGRD	BM	20	25	28	15	18
Business UGRD	BA	6	5	4	5	4
Business UGRD	BS	272	265	321	341	320
Humanities & Soc. Sci GRAD	MA	9	19	14	16	10
Humanities & Soc. Sci UGRD	BA	376	392	381	393	348
Humanities & Soc. Sci UGRD	BS	40	46	48	45	33
Education GRAD	CER	26	31	30	25	17
Education GRAD	EDS	3	3	1	6	5
Education GRAD	MA	35	45	35	39	45
Education GRAD	MAT	124	107	104	111	132
Education GRAD	MED	178	207	204	215	186
Education GRAD	MS	6	1	0	0	0
Education GRAD	SCT	86	111	187	146	81
Education UGRD	BS	171	166	157	188	198
Engineering UGRD	BABM	1	0	0	0	0
Engineering UGRD	BS	8	4	5	9	3
Engineering UGRD	BSBM	27	26	24	23	30
Engineering UGRD	BSCE	32	39	24	21	23
Engineering UGRD	BSCO	6	10	12	11	10
Engineering UGRD	BSEE	5	13	16	13	15
Engineering UGRD	BSES	3	3	1	7	2
Engineering UGRD	BSME	33	39	24	21	16
Independent Studies UGRD	BA	8	9	11	12	8
Nursing, Hlth, Ex. Sci GRAD	MED	1	1	0	0	0
Nursing, Hlth, Ex. Sci GRAD	MSN	10	10	5	8	10
Nursing, Hlth, Ex. Sci GRAD	SCT	1	0	0	0	3
Nursing, Hlth Ex. Sci UGRD	BS	63	63	68	71	53
Nursing, Hlth Ex. Sci UGRD	BSN	68	63	65	72	78
Science UGRD	BA	46	57	48	42	60
Science UGRD	BS	149	203	155	186	155

Source: CIE Graduation Statistics (defined by Federal IPEDS standards – July 1 through June 30).

**FRESHMEN COHORT GRADUATION RATE BY SCHOOL
FALL 2011 Freshmen Cohort**

2011 First Time Freshmen - 4, 5, 6 Year Graduation Rates				
School	FSH Cohort #	Graduating within 4 Years %	Graduating within 5 Years %	Graduating within 6 Years %
<i>Arts & Communications</i>	161	72.05%	83.23%	86.34%
<i>Business</i>	230	81.74%	90.00%	90.87%
<i>Humanities & Social Sciences</i>	349	72.21%	84.81%	86.82%
<i>Education</i>	135	81.48%	87.41%	88.15%
<i>Engineering</i>	137	59.12%	76.64%	77.37%
<i>Nursing, Health & Exercise Science</i>	95	62.11%	81.05%	83.16%
<i>Science</i>	264	75.00%	86.36%	87.88%
Total	1371	73.23%	84.97%	86.58%

**DEGREES GRANTED BY SCHOOL AND PROGRAM
2014 – 2018**

Use the link below to access tables containing the number of degrees awarded by School, plan, race/ethnicity and gender from 2014-15 up to 2017-18.

[FBDegrees 2014 2018 1.xlsx](#)

EMPLOYEES BY IPEDS OCCUPATIONAL CATEGORY 2017 - 2018

Number of Staff by Employment Status and Occupational Category			
Academic Year 2017 - 2018			
Occupational Category	Reported Values		FTE Staff
	# of Full-time Staff	# of Part-time Staff	
Total Number of Staff	1147	530	1324
Instructional Staff	365	493	529
<i>Librarians, Curators, Archivists</i>	33	5	35
<i>Student & Academic Affairs and other Education Services</i>	86	13	90
Management Occupations	100	0	100
<i>Business & Financial Operations</i>	61	0	61
<i>Computer, Engineering & Science Occupations</i>	41	4	42
<i>Community, Social Service, Legal, Arts, Design, Entertainment, Sports and Media Occupations</i>	105	12	109
<i>Healthcare Practitioners & Technical Occupations</i>	19	1	19
Service Occupations	54	0	54
<i>Office and Administrative Support</i>	95	2	96
<i>Natural Resources, Construction, and Maintenance Occupations</i>	188	0	188

Source: IPEDS Human Resources Survey 2017-18

**EMPLOYEES BY GENDER
FALL 2013 - 2017**

	2013	2014	2015	2016	2017
<u>Faculty - Full-Time</u>	347	356	355	355	365
Male	175	174	167	167	171
Female	172	182	188	188	194
<u>Faculty - Part-Time/Adjuncts</u>	474	464	498	497	493
Male	215	218	226	218	226
Female	259	246	272	279	267
<u>Staff - Full-Time</u>	683	758	765	830	782
Male	310	333	335	370	349
Female	373	425	430	460	433
<u>Staff - Part-Time</u>	13	87	35	48	37
Male	3	47	12	20	12
Female	10	40	23	28	25
Total Employees	1,517	1,665	1,653	1,730	1,677
Male	703	772	740	775	758
Female	814	893	913	955	919

Source: IPEDS Human Resources Survey

**NUMBER OF FACULTY BY RANK AND TENURE STATUS
FALL 2013 - FALL 2017**

	2013			2014			2015			2016			2017		
	Ten/ Ten Trk	Non Ten	Total	Ten/ Ten Trk	Non Ten	Total	Ten/ Ten Trk	Non Ten	Total	Ten/ Ten Trk	Non Ten	Total	Ten/ Ten Trk	Non Ten	Total
Full-Time:															
<i>Professor</i>	90	0	90	96	0	96	98	0	98	106	0	98	112	0	112
<i>Associate Professor</i>	140	2	142	149	1	150	146	1	147	142	1	147	142	2	144
<i>Assistant Professor</i>	100	10	110	85	19	104	91	15	106	91	12	106	86	18	104
<i>Instructor</i>	0	5	5	0	6	6	0	4	4	0	3	4	0	5	5
Total Full-Time Faculty	330	12	347	330	26	356	335	20	355	339	16	355	340	25	365
Total Part-Time Faculty	0	17	17	0	21	21	0	16	16	0	19	19	0	19	19
Grand Total	330	29	364	330	47	377	335	36	371	339	35	374	340	44	384

Part-Time Faculty includes regular part-time faculty. Adjuncts are not included.

Source: EIS HR Data

**TENURE STATUS AMONG FULL-TIME TENURE TRACK FACULTY
FALL 2013 - FALL 2017**

	2013		2014		2015		2016		2017	
	Tenured/ Eligible	% Tenured	Tenured/ Eligible	% Tenured	Tenured/ Eligible	% Tenured	Tenured/ Eligible	% Tenured	Tenured/ Eligible	% Tenured
<i>Professor</i>	90/90	100%	96/96	100%	98/98	100%	106/106	100%	112/112	100%
<i>Associate Professor</i>	136/140	97.1%	142/149	95.3%	141/146	96.6%	133/142	93.7%	123/142	86.6%
<i>Assistant Professor</i>	57/100	57.0%	36/85	42.4%	32/91	35.2%	20/91	22.0%	26/86	30.2%
Total	283/330	85.8%	274/330	83.0%	271/335	80.9%	259/339	76.4%	261/340	76.8%

*Key: % Tenured = # Tenured/# Eligible * 100.*

Note: Counts include active faculty.

Source: EIS/HR Faculty Data

**AVERAGE SALARY OF FULL-TIME FACULTY BY RANK
ACADEMIC YEARS 2013-14 THROUGH 2017-18**

	2013-14		2014-15		2015-16		2016-17		2017-18	
	Average Salary \$	Average Increase from Previous Year %	Average Salary \$	Average Increase from Previous Year %	Average Salary \$	Average Increase from Previous Year %	Average Salary \$	Average Increase from Previous Year %	Average Salary \$	Average Increase from Previous Year %
<i>Professor</i>	\$118,454	2.9%	\$118,176	1.2%	\$120,493	4.6%	\$118,691	0.14%	\$123,693	5.1%
<i>Associate Professor</i>	\$94,650	3.2%	\$96,938	4.8%	\$97,216	2.9%	\$96,540	1.2%	\$101,644	7.1%
<i>Assistant Professor</i>	\$77,631	4.8%	\$78,741	4.9%	\$80,696	1.5%	\$80,268	1.4%	\$84,792	8.4%
<i>Instructor</i>	\$72,275	8.3%	\$71,079	9.0%	\$75,552	4.5%	\$76,208	0.0%	\$74,695	6.6%

Note: Includes full-time continuing faculty from previous year.

Percentage of increase from previous year reflects the percentage of change in total salary expenditures for continuing faculty only.

Source: CIE/AAUP Annual Survey of Faculty Compensation

**STATEMENT OF OPERATING ACTIVITIES
FY 2013-2017**

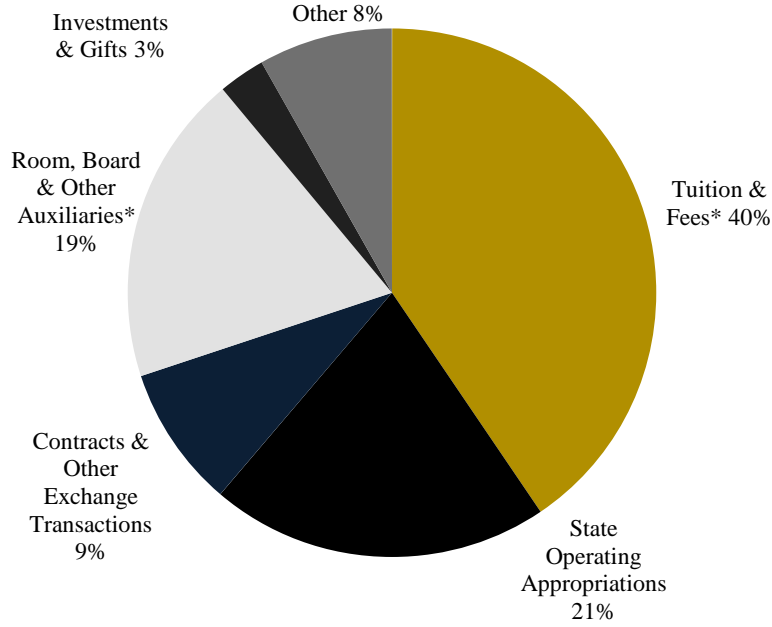
	FY13	FY14	FY15	FY16	FY17
Operating Revenue and Additions:					
Tuition & Fees, net of discounts and allowances	\$88,326,000	\$90,913,000	\$94,951,000	\$98,482,000	\$101,532,000
State operating appropriations	\$53,311,000	\$53,079,000	\$53,847,000	\$52,439,000	\$51,979,000
Contracts & other exchange transactions	\$21,169,000	\$20,048,000	\$21,127,000	\$22,294,000	\$21,726,000
Room, board & other auxiliaries, net of discounts and allowances	\$40,678,000	\$46,083,000	\$44,986,000	\$45,145,000	\$47,770,000
Investments & gifts	\$1,448,000	\$6,270,000	\$3,762,000	\$2,598,000	\$7,127,000
Other	\$3,850,000	\$8,777,000	\$18,841,000	\$41,119,000	\$20,566,000
Total operating revenues and support	\$208,782,000	\$225,170,000	\$237,514,000	\$262,077,000	\$250,700,000
Total Discounts and Allowances	\$26,882,000	\$27,349,000	\$26,521,000	\$25,649,000	\$25,547,000
Operating Expenses and Transfers:					
Instruction & Academic support	\$103,702,000	\$105,725,000	\$111,073,000	\$108,921,000	\$115,654,000
Sponsored activities	\$21,768,000	\$23,617,000	\$24,473,000	\$27,294,000	\$26,318,000
Student services	\$20,881,000	\$22,527,000	\$24,981,000	\$26,573,000	\$28,023,000
Student aid	\$1,024,000	\$1,039,000	\$1,293,000	\$1,302,000	\$1,186,000
Institutional Support	\$17,769,000	\$19,220,000	\$24,102,000	\$23,692,000	\$23,951,000
Room, board & other auxiliaries	\$35,087,000	\$37,401,000	\$36,999,000	\$36,709,000	\$39,359,000
Operation and maintenance of plant*	\$0	\$0	\$0	\$0	\$0
Transfers & other	\$292,000	\$2,005,000	\$782,000	\$1,744,000	\$4,685,000
Total operating expenses and transfers	\$200,523,000	\$211,534,000	\$223,703,000	\$226,235,000	\$239,176,000

Note: As of FY09-10, Operation and maintenance of plant expenses were reallocated within other areas and no longer a separate item under Expenses.

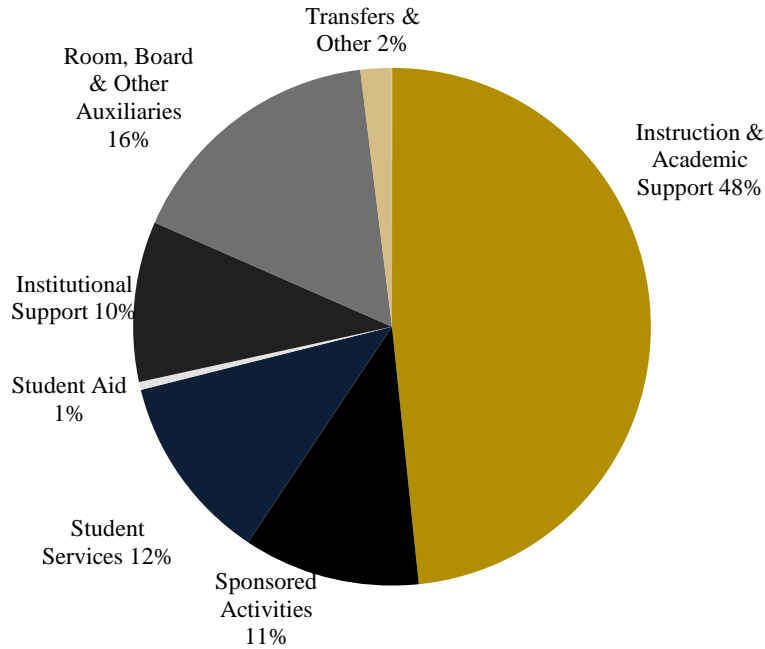
Source: CIE/IPEDS Finance Survey, GASB

OPERATING REVENUE, EXPENSES AND TRANSFERS FISCAL YEAR 2017

REVENUE (\$250,700,000)



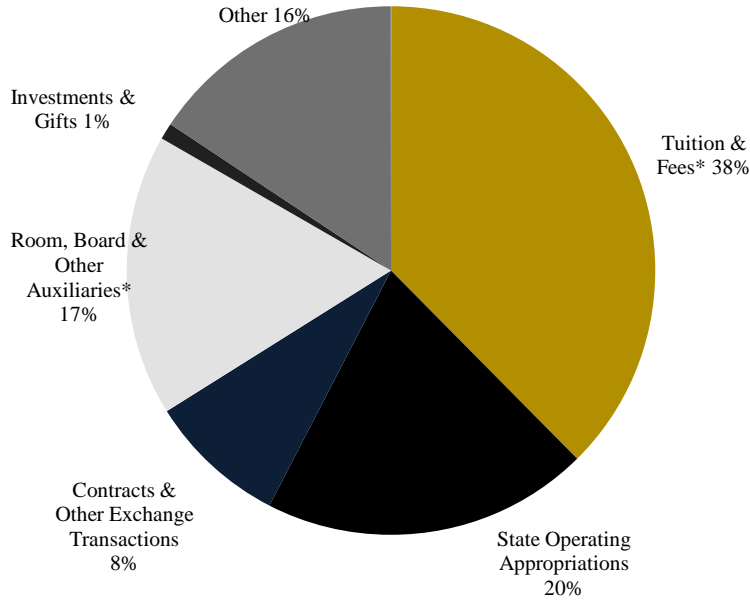
EXPENSES & TRANSFERS (\$239,176,000)



Source: CIE/IPEDS 2017-18 Finance Survey, FY17, GASB

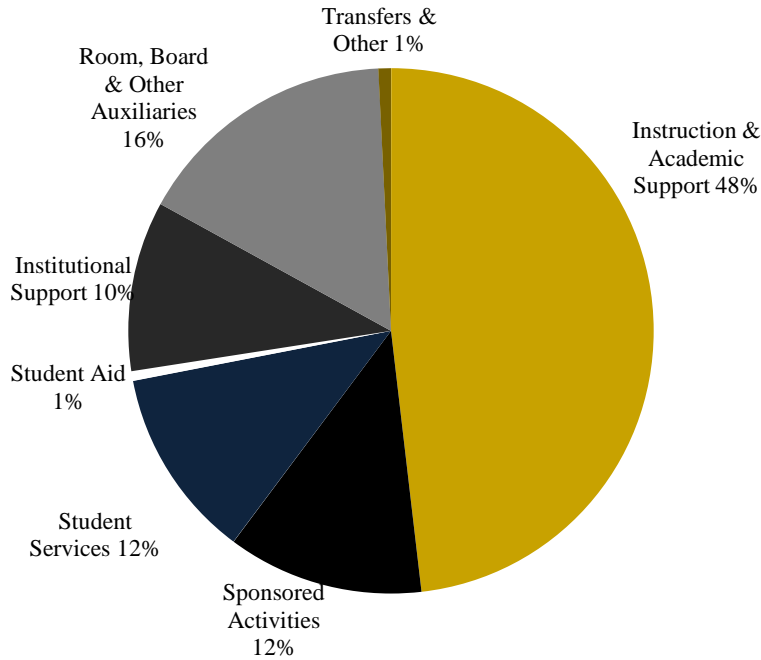
OPERATING REVENUE, EXPENSES AND TRANSFERS FISCAL YEAR 2016

REVENUE (\$262,077,000)



**Net of Scholarship & Fellowship Allowance*

EXPENSES & TRANSFERS (\$226,235,000)



Source: CIE/IPEDS 2016-17 Finance Survey, FY16, GASB

**CHANGE IN NET ASSETS
FY 2014 - FY 2017**

	FY14	FY15	FY16	FY17
Assets:				
Current Assets	\$120,239,000	\$127,811,000	\$126,811,000	\$117,076,000
Capital Assets, net	\$587,655,000	\$601,473,000	\$638,881,000	\$673,155,000
Other noncurrent assets	\$65,599,000	\$64,571,000	\$53,879,000	\$87,879,000
Total assets	\$773,493,000	\$793,855,000	\$819,571,000	\$878,110,000
Deferred outflow of resources	\$22,559,000	\$25,893,000	\$47,366,000	\$76,821,000
Liabilities:				
Current liabilities	\$47,537,000	\$55,912,000	\$54,970,000	\$50,520,000
Noncurrent liabilities	\$389,375,000	\$497,877,000	\$516,552,000	\$598,341,000
Total liabilities	\$436,912,000	\$553,789,000	\$571,522,000	\$648,861,000
Deferred inflows of resources	-	\$3,537,000	\$724,000	\$129,000
Net Assets:				
Invested in capital assets, net of related debt	\$229,359,000	\$251,027,000	\$283,072,000	\$324,924,000
Restricted expendable	\$11,641,000	\$11,383,000	\$12,607,000	\$15,430,000
Unrestricted	\$118,140,000	\$12,000	(\$988,000)	(\$34,413,000)
Total net position	\$359,140,000	\$262,422,000	\$294,691,000	\$305,941,000
<i>Ratio of current assets to current liabilities</i>	2.53	2.29	2.31	2.32

Source: Treasurer's Office, TCNJ
(Amounts for years prior to FY15 have not been restated to reflect the effect of GASB 68)

**EXTERNALLY SPONSORED ACTIVITIES
AWARDED GRANTS – FY2017**

Awarded - FY2017		
SCHOOL	DEPARTMENT	TOTAL AWARDS
Art & Communications	Sarnoff Collection	\$1,950.00
	TCNJ Art Gallery	\$4,400.00
School of Art & Communications Total		\$6,350.00
School of Business Total	SBDC	\$231,400.50
Centers	Bonner	\$416,485.00
	NJ Sustainable Self Institute	\$780,000.00
Community Centers Total		\$1,196,485.00
Education	CSCD	\$2,388,405.92
	Ed. Admin. & Secondary Education	\$200,000.00
	Elementary & Early Childhood Ed.	\$679,774.79
	Special Ed, Language & Literacy	\$37,709.13
	Counselor Education	\$10,000.00
School of Education Total		\$3,315,889.84
Engineering	MUSE	\$50,000.00
	Civil Engineering	\$44,269.72
	Electrical/Computer Engineering	\$7,500.00
	Tech Studies - STEM	\$146,500.00
School of Engineering Total		\$248,269.72
School of Nursing Health & Exercise Total	Nursing	\$256,124.00
Science	Biology	\$414,524.50
	Computer Science	\$360,000.00
	Physics	\$1,205,000.00
School of Science Total		\$1,979,524.50
Student Affairs	TCNJ Clinic	\$245,000.00
	Health & Wellness - ADEP	\$81,002.00
Student Affairs Total		\$326,002.00
College of New Jersey Total		\$7,560,045.56

Source: Office of Grants and Sponsored Research

Awarded List does not include all TCNJ departments

**UNDERGRADUATE TUITION, FEES, ROOM AND BOARD CHARGES AND ANNUAL RATE OF INCREASE,
ACADEMIC YEARS 2007-08 UP TO 2017-18**

Year	Tuition				Fees		Room & Board*	
	Resident		Non-Resident					
	\$	% Increase	\$	% Increase	\$	% Increase	\$	% Increase
2007-08	8,072	6.0%	15,295	8.0%	3,235	10.1%	9,242	4.5%
2008-09	8,718	8.0%	16,825	10.0%	3,590	11.0%	9,612	4.0%
2009-10	8,980	3.0%	17,666	5.0%	3,742	4.2%	9,996	4.0%
2010-11	9,340	4.0%	18,726	6.0%	3,953	5.6%	10,358	3.6%
2011-12	9,760	4.5%	19,569	4.5%	4,127	4.4%	10,677	3.1%
2012-13	10,102	3.5%	20,254	3.5%	4,276	3.6%	10,998	3.0%
2013-14	10,355	2.5%	20,760	2.5%	4,375	2.3%	11,343	3.0%
2014-15	10,562	2.0%	21,175	2.0%	4,462	2.0%	11,676	2.9%
2015-16	10,879	3.0%	21,810	3.0%	4,587	2.8%	12,498	7.0%**
2016-17	11,124	2.3%	22,301	2.3%	4,670	1.8%	12,881	3.1%****
2017-18***	12,632	2.3%	24,061	2.0%	3,517	2.3%	13,200	2.5%****

Source: CIE/Common Data Set

* Board = Carte Blanche 'C' plan except as noted

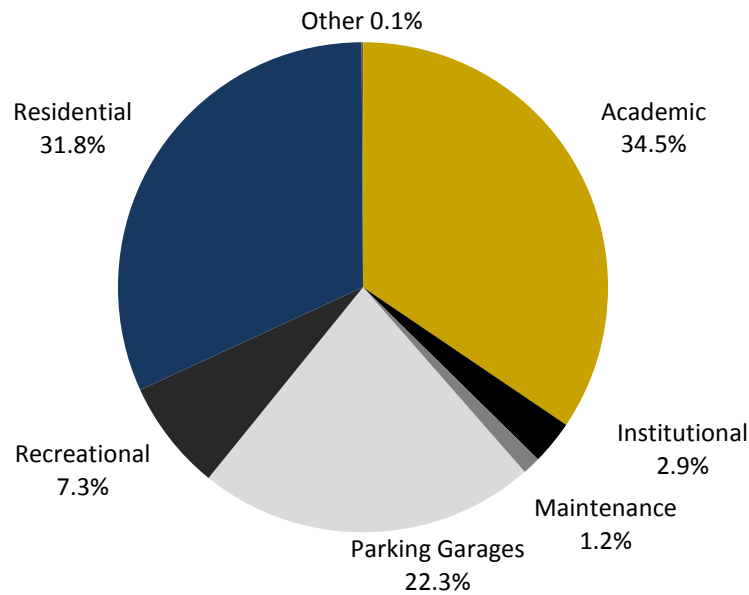
** Board charges for 2015-16 reflect pricing for Carte Blanche 'B' plan

*** Tuition for 2017-18 includes fees for Student Services and Computing Access, which were formerly included under Fees

**** Board Charges for 2016-17 and 2017-18 reflect pricing for 'Ala Carte 1' plan

CAMPUS BUILDING INVENTORY 2017-18

	SqFt.%	Sq.Ft.	#Buildings
Academic	34.48%	1,244,717	16
Institutional	2.89%	104,148	2
Maintenance	1.19%	43,111	3
Parking Garages	22.27%	803,684	5
Recreational	7.28%	262,892	5
Residential (on campus)	31.80%	1,148,021	13
Other	0.08%	3,055	1
Total Campus Buildings	100.0%	3,609,628	45



Source: TCNJ Facilities, Residential Education Offices

THE COLLEGE OF NEW JERSEY LIBRARY

Facilities and Services

The College of New Jersey Library, provides high-quality information resources, expertise and a learning environment that enhance the search for knowledge and understanding. The Library serves as an intellectual, cultural and social center for the College, empowering TCNJ community members to become self-directed, lifelong learners and responsible citizens.

The five-story, 135,000 square-foot facility, in addition to housing the traditional library collections and services, provides 26 group study rooms, a café, a late-night study area, and a 105-seat multi-purpose auditorium.

TCNJ Library Collections:

Archives: Materials documenting the college's history, dating from the Normal School era in the mid-1800's to the present. Materials range from early annual reports and a historic textbook collection, through college publications, to photographs, slides, and memorabilia.

Children's/Young Adults Collection: This specialized area of over 28,000 titles contains many award winning fiction and non-fiction resources for young people from preschool age through senior high school. Included are reference materials for school age students including: folk tales, poetry, subject guides to picture books, bibliotherapy, selected summaries, review sources and encyclopedias.

Curriculum & K-12 Elementary – High School Texts Collections: The Curriculum Reference Collection contains several thousand curriculum guides on microfiche from the Kraus Curriculum Development Library. Behavior objective guides by subject, multiple titles in the series, *Educators Guide to Free Materials*, and Scope and Sequence charts.

General Collection: The General Collection consists of more than 562,000 books that have been selected by faculty and subject specialist librarians to support course offerings of the college and to provide a broad representative collection of titles across many disciplines. This growing collection includes fiction, non-fiction, and children's/youth books.

Music & Media: The library's Music and Media Collections consist of ca. 7,500 volumes of printed music, ca. 21,000 sound recordings in LP and CD format, and ca. 13,000 video recordings in DVD, VHS and U-Matic formats.

Periodicals: The library has access to over 30,000 periodical titles, which are available in a variety of formats: print, online, and microfilm/microfiche.

Reference: The Reference Collection numbers approximately 11,000 volumes and includes general encyclopedias, almanacs, dictionaries, atlases, and the like, as well as a large collection of subject specific reference works.

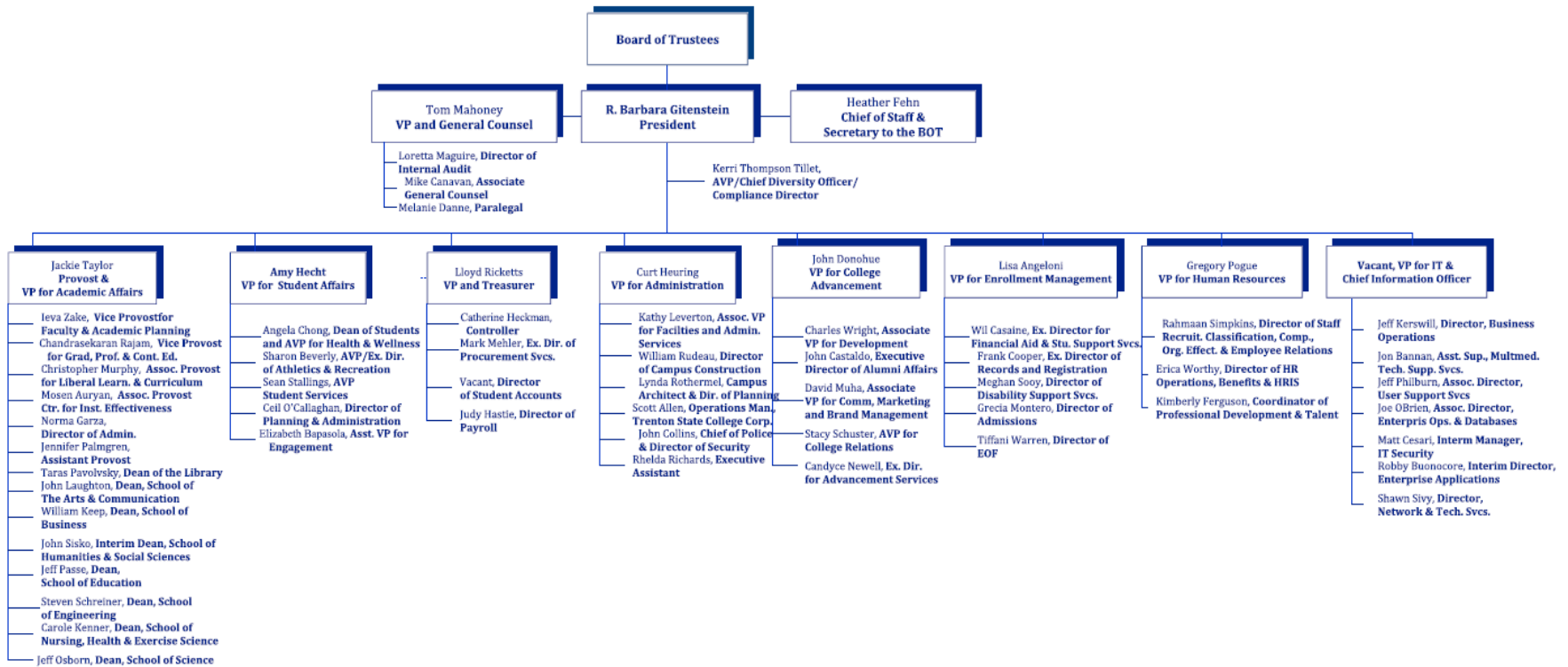
Library Holdings Fiscal Year 2017 (IPEDS Academic Libraries (2017-18)) :

Books, serial back files, and government documents: _____	854,214
<i>(Including bound periodicals & newspapers; physical & digital/electronic)</i>	
Current serial subscriptions: _____	98,733
<i>(Paper, microform & electronic titles)</i>	
Video and audio (units): _____	59,573
Online electronic database access: _____	125
Total Circulation: _____	53,139

**THE COLLEGE OF NEW JERSEY
REGIONAL, NATIONAL, AND SPECIALIZED ACCREDITORS**

Accreditation Board for Engineering and Technology (**ABET**)
American Chemical Society (**ACS**)
Association to Advance Collegiate Schools of Business (**AACSB**)
Association of Small Business Development Centers (**SBDC**)
Commission on Collegiate Nursing (**CCNE**)
Computing Accreditation Commission of Accreditation Board for Engineering and Technology (**CAC**)
Council on Education of the Deaf (**CED**)
Council for Accreditation of Counseling & Related Education Programs (**CACREP**)
Engineering Accreditation Commission of Accreditation Board for Engineering and Technology (**EAC**)
Middle States Commission on Higher Education (**MSCHE**)
National Association of Schools of Music (**NASM**)
Council for the Accreditation of Educator Preparation (**CAEP**)
National League for Nursing Accreditation Commission (**NLNAC**)

ADMINISTRATIVE ORGANIZATIONAL CHART 2015



MEMBERS OF THE BOARD OF TRUSTEES

AS OF SEPTEMBER 2017

Ex-Officio Members

Dr. R. Barbara Gitenstein, PhD, *President, Ex-Officio*

Officers of the Board

Mr. Jorge A. Caballero, *Chair*

Ms. Susanne Svizeny, *Vice Chair*

Dr. Robert A. Altman, *Secretary*

Appointed Members

Mr. Bradley S. Brewster

Mr. Miles Powell II

Mr. Christopher R. Gibson, Esq.

Ms. Eleanor V. Horne

Mrs. Rosie Hymerling

Ms. Treby Williams

Dr. Frederick Keating

Mr. Albert M. Stark

Mr. Brian Markison

Ms. Rebecca A. Ostrov

Mr. Anthony J. Cimino

Mr. Carl R. Gibbs

Student Members

Ms. Priscilla Nunez, *Student Trustee*

Mr. Eashwayne Haughton, *Alternate Student Trustee*

Faculty Representatives

Dr. Jana Gevertz

Dr. David Prensky

Staff Representatives

Mr. Joseph O'Brien

Mr. Timothy Grant

Equal Employment Opportunity & Diversity/Affirmative Action

The College of New Jersey is committed to equal opportunity, affirmative action and diversity. The College values diversity and is actively engaged in enriching the diversity of its faculty, staff and students. Central to the College's mission is creating a climate that is inclusive and respectful to everyone on campus. The College of New Jersey does not discriminate on the basis of race, creed, color, national origin, nationality, ancestry, age, sex/gender (including pregnancy), marital status, civil union status, domestic partnership status, familial status, religion, affectional or sexual orientation, gender identity or expression, atypical hereditary cellular or blood trait, genetic information, liability for service in the Armed Forces of the United States, or disability.